

BERGAMO



Un nuovo progetto firmato Arch. Traversi in collaborazione con Edilvertova, nasce dall'idea che si può vivere la città coniugando natura e funzionalità in modo eccellente. L'operazione si struttura su 4 piani, compreso di attico, con n°8 unità abitative





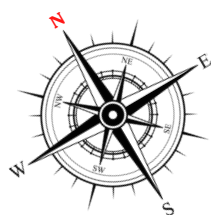






Unità A8.P3

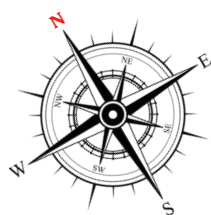
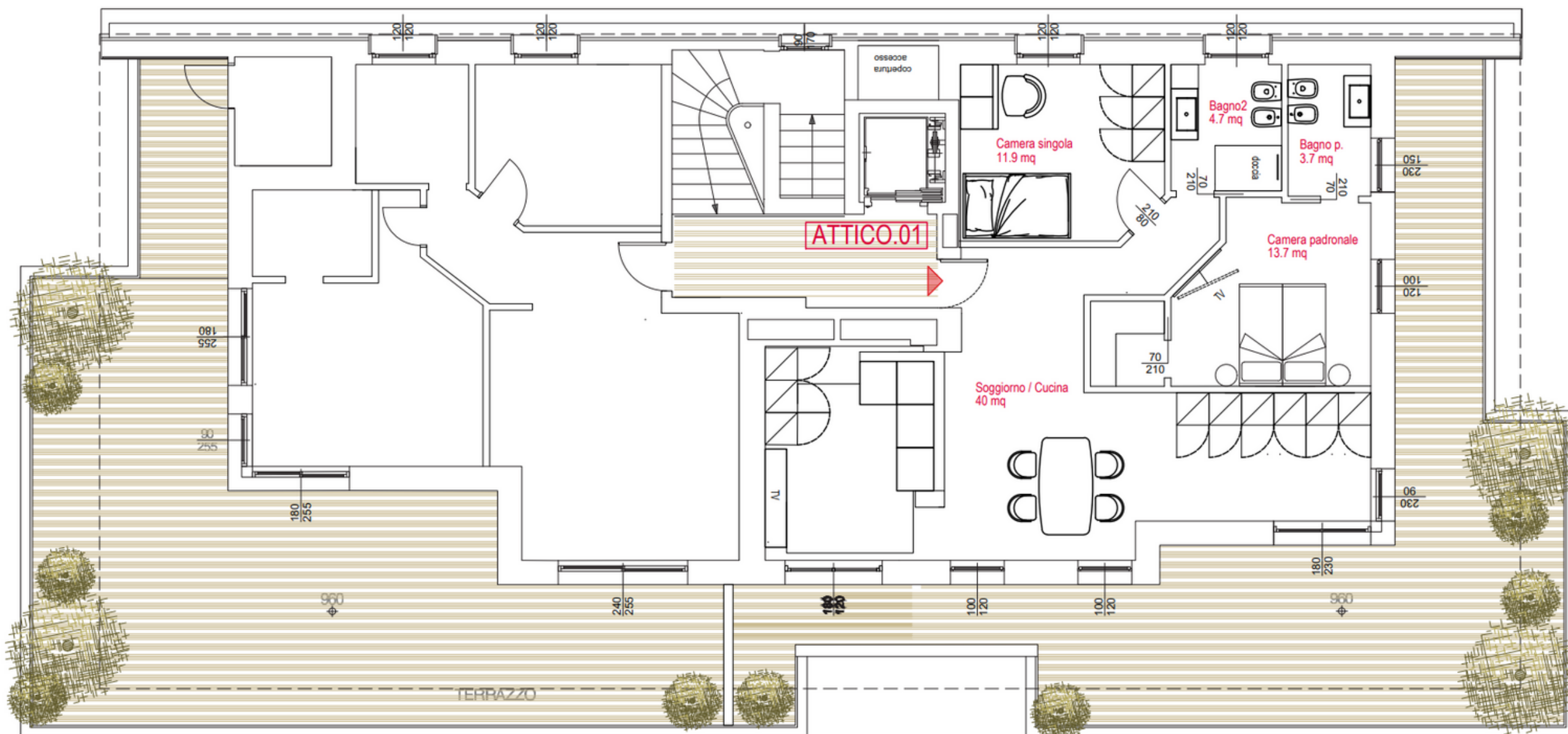
Piano	Destinazione	Superficie
P3	Appartamento	200 mq
P3	Balcone-Camminamento	137 mq



TRILOCALE_ATTICO

Unità A8.P3

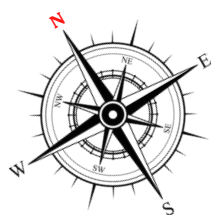
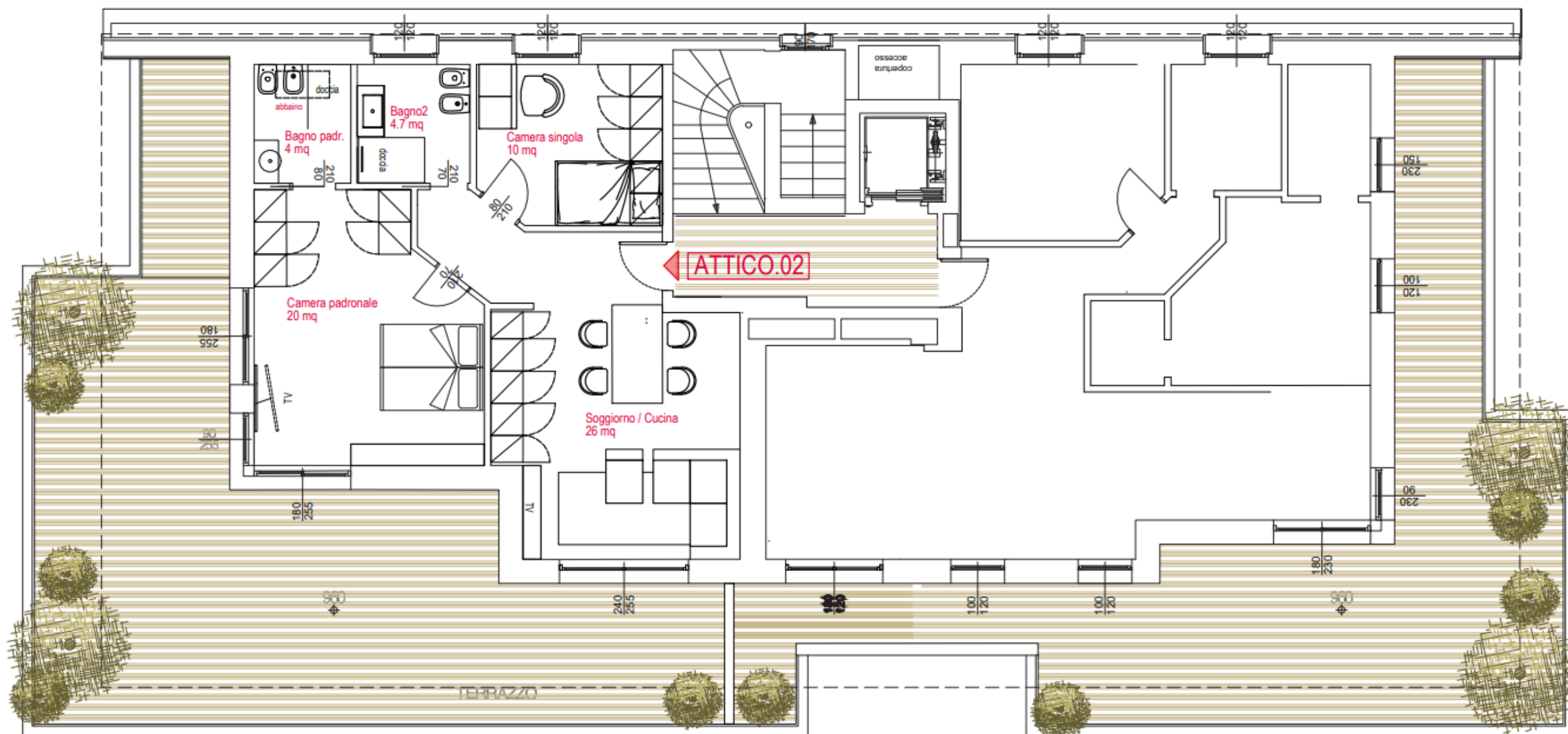
Piano	Destinazione	Superficie
P3	Appartamento	100 mq
P3	Balcone-Camminamento	63 mq



TRILOCALE_ATTICO

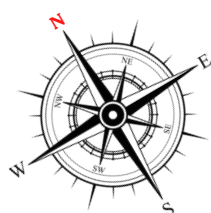
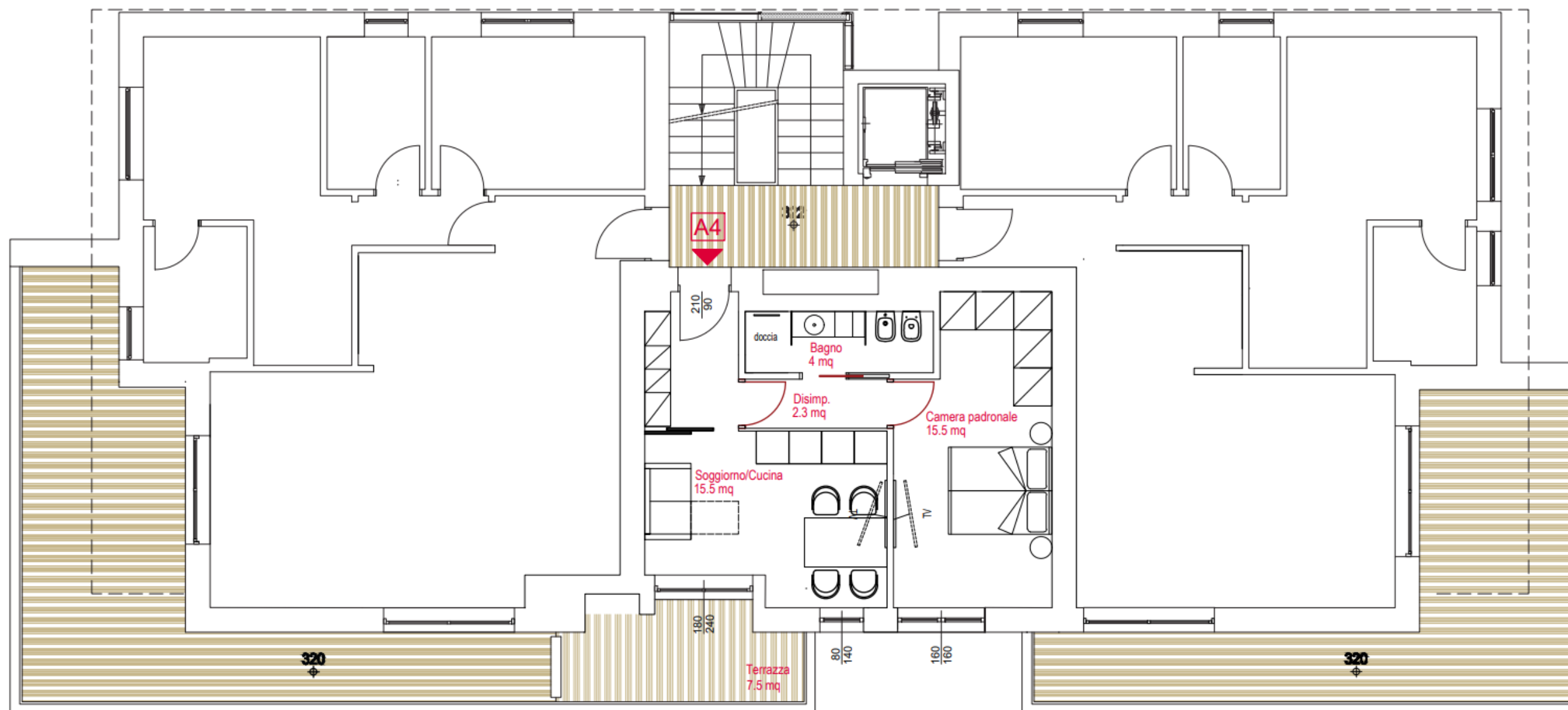
Unità A8.P3

Piano	Destinazione	Superficie
P3	Appartamento	83 mq
P3	Balcone-Camminamento	75 mq



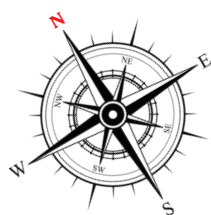
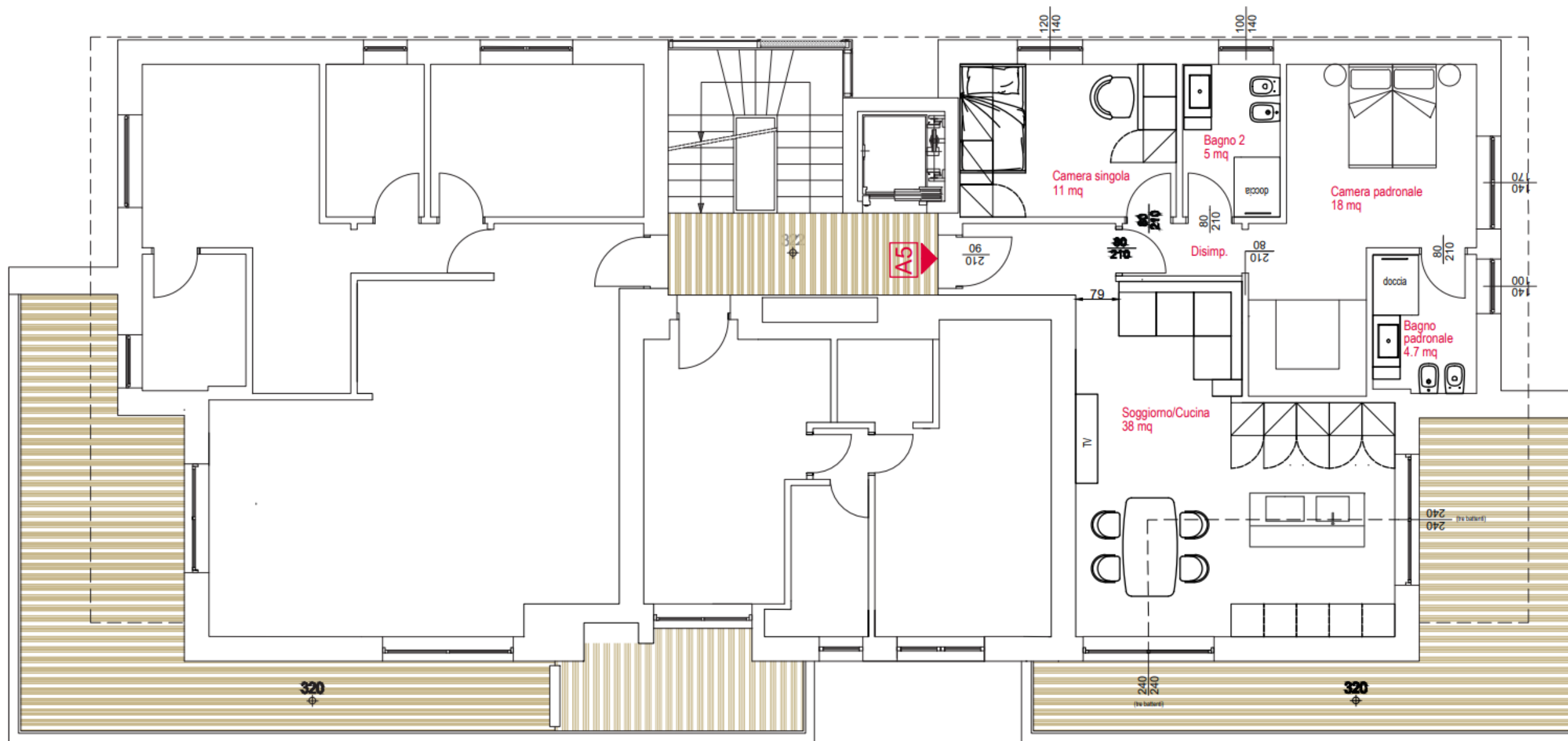
Unità A4.P1

Piano	Destinazione	Superficie
P1	Appartamento	53 mq
P1	Balcone-Camminamento	8 mq



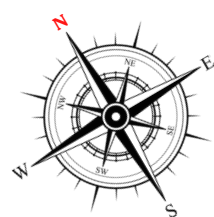
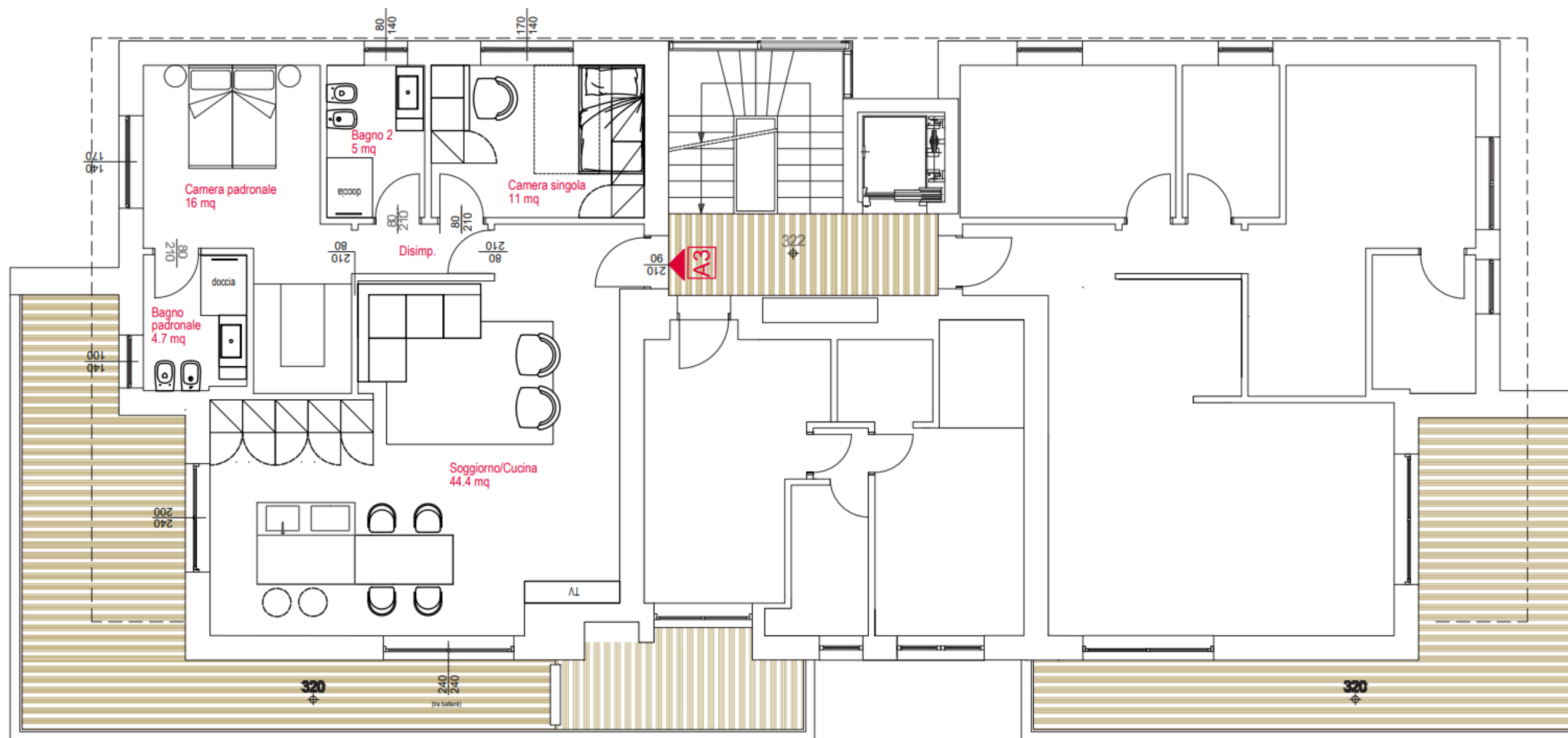
Unità A5.P1

Piano	Destinazione	Superficie
P1	Appartamento	97 mq
P1	Balcone-Camminamento	29 mq



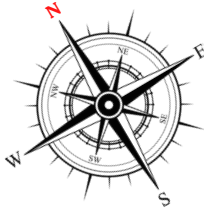
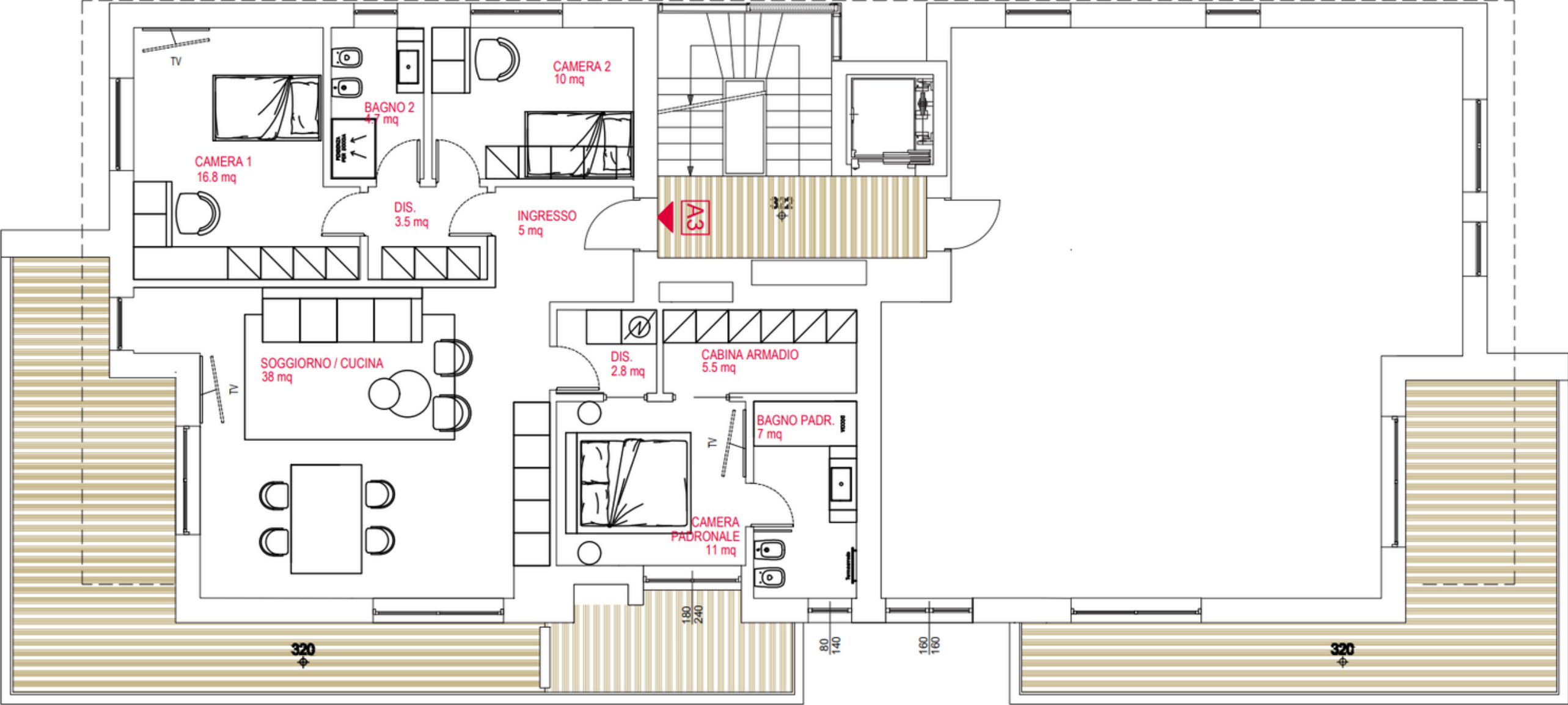
Unità A3.P1

Piano	Destinazione	Superficie
P1	Appartamento	100 mq
P1	Balcone-Camminamento	34 mq



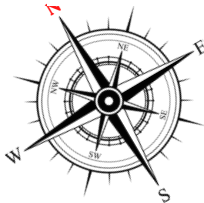
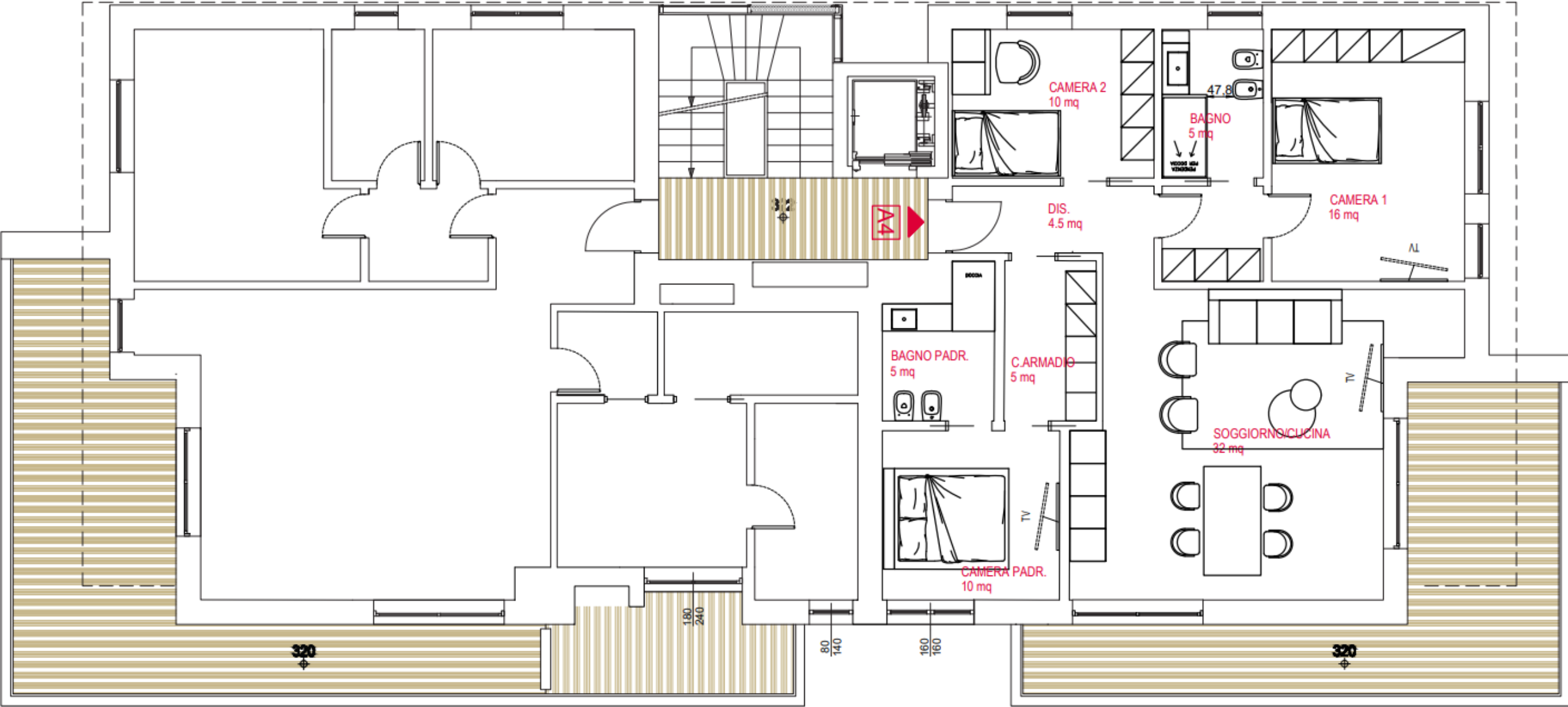
Unità A3.P1

Piano	Destinazione	Superficie
P1	Appartamento	134 mq
P1	Balcone-Camminamento	42 mq



Unità A4.P1

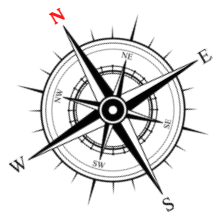
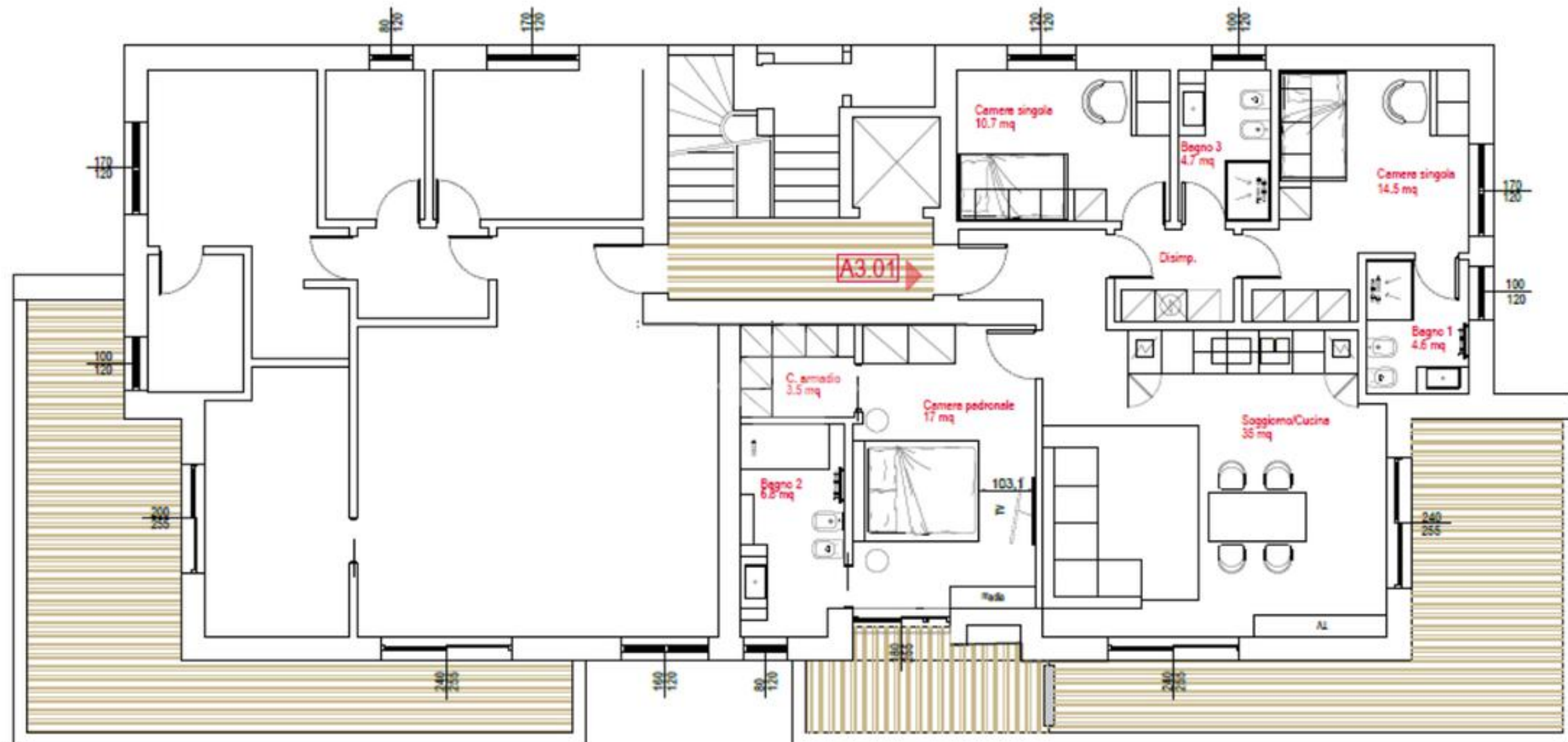
Piano	Destinazione	Superficie
P1	Appartamento	117 mq
P1	Balcone-Camminamento	29 mq



QUADRILOCALE_P2

Unità A6.P2

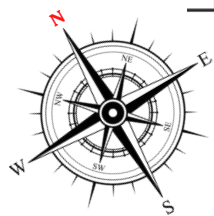
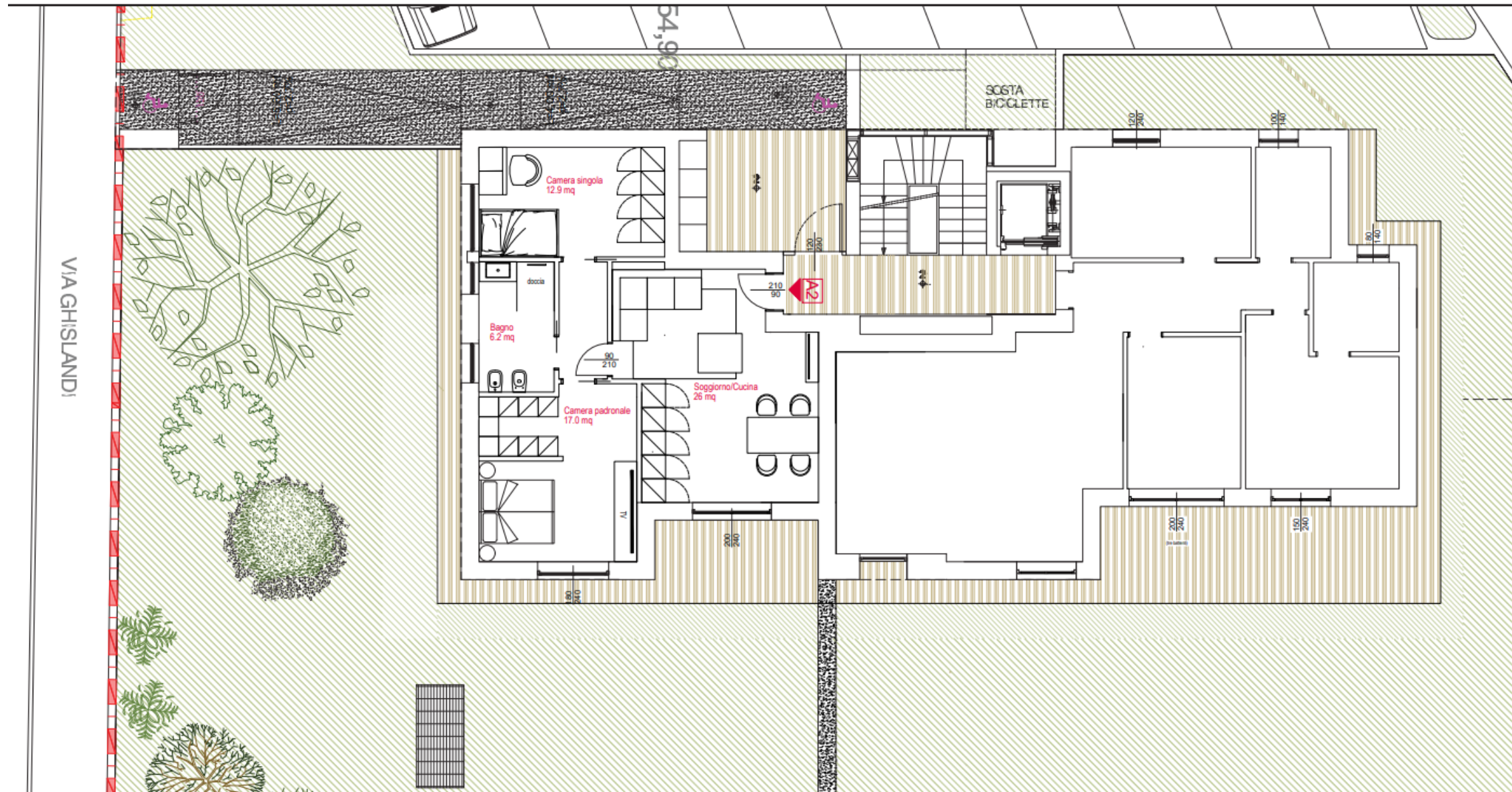
Piano	Destinazione	Superficie
P2	Appartamento	132 mq
P2	Balcone-Camminamento	37 mq



Unità A2.PT

Piano	Destinazione	Superficie
P2	Appartamento	85 mq
P2	Balcone-Camminamento	19 mq

TRILOCALE_PT



Unità A1.PT

Piano	Destinazione	Superficie
PT	Appartamento	120 mq
PT	Balcone-Camminamento	30 mq

